

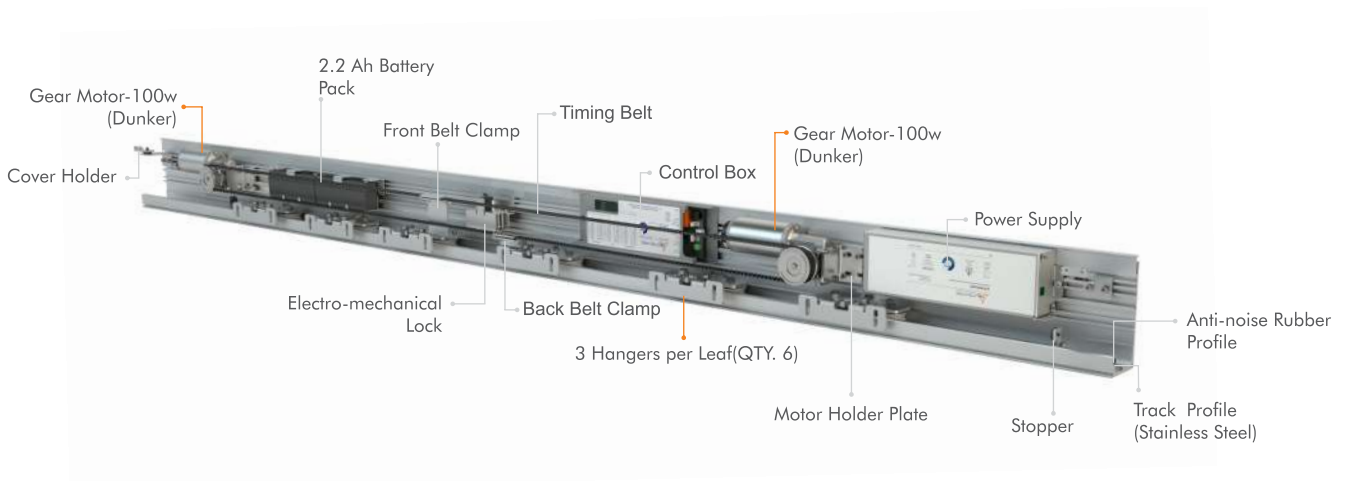
[www.deuschtec.de](http://www.deuschtec.de)

## PrimeDrive/H

Automatic Sliding Door-Heavy Duty

# PrimeDrive/H

Our PrimeDrive/H has proven itself to be a dependable and powerful sliding entry solution. Whether you are dealing with demanding entrances with high traffic, doors with multiple-glazing glass or tall wide heavy doors, PrimeDrive/H is here to meet your needs. This has been achieved by using 3 hangers per leaf and two sets of 100W motors.



Standards	PrimeDrive/H
DIN18650	✓
EN16005	✓
EN60335	✓

Standards	PrimeDrive/H
EN ISO 13849	✓
CE conformity	✓
Tested for 1,000,000 cycles	✓

Technical Detail	PrimeDrive/H
Opening width - single panel	800 - 2000 mm
Opening width - double panel	1000 - 3000 mm
Max leaf weight, single	1 x 400 Kg
Max leaf weight, double	2 x 250 Kg
Operator height	100 mm
Operator depth	174 mm
Opening speed	Variable up to 1.7 m/s (two leaves)
Closing speed	Variable up to 1.7 m/s (two leaves)
Hold-open time	0 - 30 s
Ambient temperature	-15 to + 50°C
Protection class	IP 20
Track profile	Stainless Steel
Anti-noise rubber profile	✓
External protected power supply	✓
Power supply power	230V / 28V, 240VA
Gear motor power	200 W (2 x 100W)
Number of control units	1
Number of hangers per leaf	3
Dual gear motor and control unit set for master and slave concept	-
Max power consumption	500 W
Max operation cycles with 2.2 Ah battery (Optional)	≈400

Technical Detail	PrimeDrive/H
Possibility to adjust force limitation according to DIN18650 and EN16005	✓
Possibility to use safety sensors with testing signal	✓
Emergency exit routes in both directions	-
Mechanical key switch (Optional)	✓
24V DC output for external accessories	✓
Power Lock	✓
Possibility of using electromechanical lock (Optional)	✓
Lock monitoring	✓
Possibility of using digital programme switch (Optional)	✓
Read-out error memory with error codes (with digital programme switch)	✓
Programmable output (Optional)	✓
Programmable input (Optional)	✓
Possibility of using more software and hardware options by using DEAP device (Optional)	✓

#### Frame Types

TBS	✓
THB	✓
UTS	✓
Saturn	✓
DEP	✓
Frameless	✓

## CONTROL UNIT

By drawing on the most advanced German engineering technology together with a fruitful collaboration with German electronic manufacturers, Deutschtec PrimeDrive series' controlling microprocessor circuit boards have been made to respond to all European Union and German necessities such as machinery directive, electromagnetic compatibility (EMC) and low voltage directives. Moreover, its software and electronic design have met all relevant German and European standards such as DIN18650, EN16005 and EN ISO 13849. These distinguishing features guarantee the highest levels of security and the most durable system. Furthermore, due to the use of sophisticated technologies to save energy and resources you can be justly proud of enjoying an eco-friendly technology!



EN ISO  
13849-1

DIN  
18650-2

DIN  
18650-1

EN  
16005

EN  
60335-1

## GEAR MOTOR

To make sure this robust product has the strength to handle large heavy doors, PrimeDrive/H employs two 100W motors. Like its other state-of-the-art parts, the motors are fully made in Germany, are absolutely indestructible and there to ensure reliable performance for a lifetime. Great efficiency and enhanced function are achieved through employing years of experience and the latest technologies in the process of our motors' design and production. These brushed DC motors are so quiet that while in action, you will hear nothing but a muffled sound.



# TRACK PROFILE

Deuschtec PrimeDrive/H plays the most hauntingly beautiful music: smooth silence! By making use of stainless steel track profiles, we have managed to present you with trustworthy hard-wearing entry solutions which will please your eyes with their splendor and will treat your ears kindly by their soft performance. Since Deuschtec's stainless steel track profiles are rustproof and anti-abrasion, they will never need to be replaced.

This will be a great value for your money during time and will prevent any possible complications which may happen when replacing profiles. Its artistic profiles will also make our PrimeDrive/H stay with you for a much longer time.



# POWER LOCK

In many cases, there is no real need for (optional) electromechanical lock and buildings ensure security by other means. However, it is necessary for the entrance to be allowed limited access. In this case, power lock free function is a wholesome solution. When the door is locked, if there is pressure on it for becoming open, the motor will use its full power in the opposite direction and make it practically improbable to enter for unauthorized individuals.



# FRAMES

## THB - THERMAL BREAK FRAME

A great choice of frame to pair with this impeccable series is thermal break frames (THB) which by insulating the door against undesired or harsh weather conditions, save the energy and consequently, your budget! Furthermore, since these are incredibly strong frames, they are an ideal option when heavy doors are required.



## TBS - THERMAL BREAK FRAME

When saving energy is of importance, TBS frame is an economical and inexpensive solution. Besides being thermal break, it can be coupled with double-glazing glass. Its thinness and also being an energy-saver, have made TBS frame a smart gorgeous choice for modern architecture. This type of frame has successfully been tested for escape doors.



## UTS

This frame is the non-thermal break version of TBS and has all its advantages. Due to not being thermal break, it has an even more competitive price. While enjoying all TBS beauties, for buildings' inside doors and for places where the exchange of cold and hot air does not matter much, UTS is an excellent value.



## SATURN

This is a reasonably-priced frame suitable for single-glazing and tempered glass. When you wish to have a glass frontage and yet, prefer to use a thin frame instead of frameless glass, Saturn is a convenient low-priced solution.



## DEP

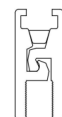
This is a new non-thermal frame which has a competitive price. This frame is suitable for single glazing and tempered glass. Small thickness and high strength of this frame make it an ideal choice for architectures.



## FRAMELESS

This full-glass system is the most suitable choice for those who wish to have elegance combined with radiance.

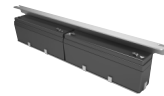
These sliding doors provide excellent light exchange between inside and outside.



# ACCESSORIES

## Battery

PrimeDrive series will continue functioning even after a power-cut thanks to their powerful 2.2 Ah batteries. Needless to say, the number of operation cycles depends on some key factors such as door leaves' weight, traffic, speed adjustment, etc.



## Digital Programme Switch

Using digital switch you will get easy access to all performance data and parameters and for any special need you might have, its adjustment and diagnostic processes can be accurately duplicated or customized. Protection password code is another significant feature of this digital programme switch.



## Electromechanical lock-GN

Deuschtec Electromechanical lock utilizes steel pins to lock both leaves simultaneously and therefore, is much safer compared to those models which lock the timing belt or just one leaf. Furthermore, since it employs bi-stable mechanism, system's power reset does not affect the lock's state. Due to using powerful batteries and an intelligent circuit, battery usage is reduced to zero when the door is locked and there is a power-cut.\*



## Mechanical Key Switch

Deuschtec PrimeDrive presents its mechanical key switch with the five modes of full open, partial open, lock, automatic and one-way. Simple yet functional, this is another accessory which will definitely come in handy.



## HIGHLY SECURE ELECTROMECHANICAL MULTI-POINT LOCK [HSML]

This highly secure electromechanical multi-point lock is a real necessity in places where increased security is demanded. Using steel pins, it will simultaneously lock the leaves together and to the floor, which has been pre-drilled to provide the required holes for the pins. Intruders will be slowed down and stopped thanks to this lock's power to resist dynamic/static forces and aggressive tools such as wedges.



\*Thus, even weeks after the input electricity has been cut, the system can open the lock and the door by the key switch, which is an optional accessory and can be installed outside of the entry area.



w w w . d e u t s c h t e c . d e

Deuschtec GmbH  
Am Fuchsbau 13  
15345 Petershagen/Eggersdorf  
Deutschland

Phone: +49 (0)3341 30 22 4 - 0  
Fax: +49 (0)3341 30 22 4 - 25

E-Mail: [info@deuschtec.de](mailto:info@deuschtec.de)



EN.15.28072019